

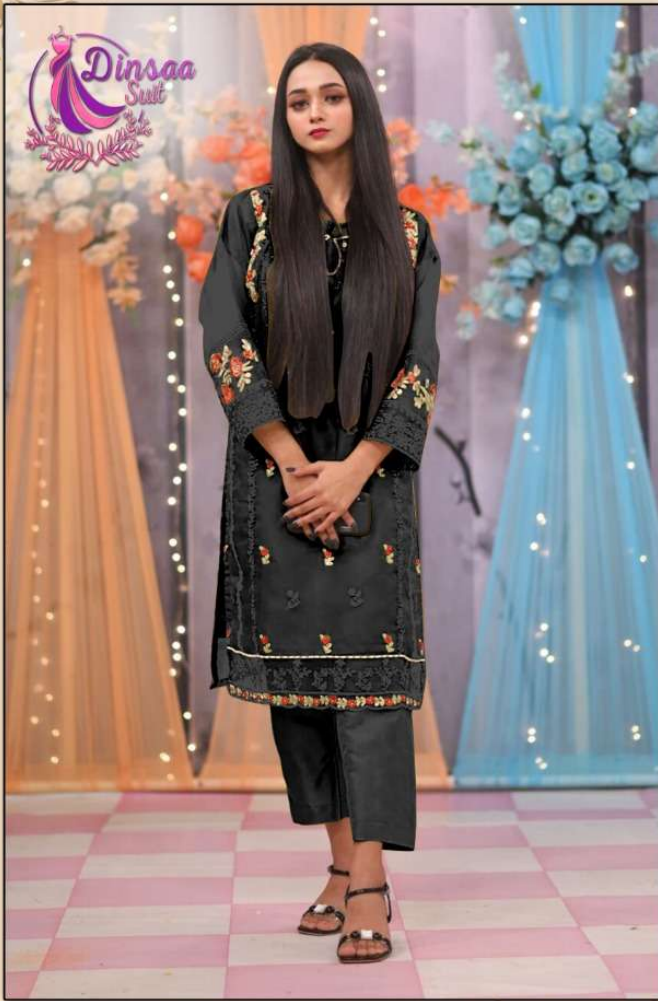
DS-169 D

**Top- HEAVY ORGANZA EMBROIDERY WITH HAND WORK**

**Bottom/Inner- SANTOON**

**Dupatta- HEAVY ORGANZA EMBROIDERY**

**WASHING INSTRUCTIONS**  
 DO NOT DRY AT THE END OF DRY CLEANING OR HANG AS US  
 BEFORE DRYING OR HANGING, SHOULD BE SOAKED IN COLD WATER  
 ALL COMPONENTS SHOULD BE WASHED SEPARATELY  
 DO NOT USE HOT WATER IN WASHING OR DRYING OF FABRIC  
 IRON- DUBBED AND WETTER PRESSURE  
 WASHING INSTRUCTIONS SHOULD BE FOLLOWED BY THE CUSTOMER  
 IF YOU HAVE ANY QUERY PLEASE CONTACT US



DS-169 D

**Top- HEAVY ORGANZA EMBROIDERY WITH HAND WORK**

**Bottom/Inner- SANTOON**

**Dupatta- HEAVY ORGANZA EMBROIDERY**

**WASHING INSTRUCTIONS**  
 DO NOT DRY IN THE SUN OR IN A DRYER. WASH IN COLD WATER.  
 BEFORE DRYING, TURN INSIDE OUT TO PROTECT EMBROIDERY.  
 DO NOT USE BLEACH. DO NOT USE IRON. DO NOT USE DRYER.  
 WASH IN COLD WATER. DO NOT USE IRON. DO NOT USE DRYER.  
 DO NOT USE BLEACH. DO NOT USE IRON. DO NOT USE DRYER.



DS-169-A



DS-169-B



DS-169-C



DS-169-D



**Dinsaa**  
Suits



DS-169 A

**Top- HEAVY ORGANZA EMBROIDERY WITH HAND WORK**

**Bottom/Inner- SANTOON**

**Dupatta- HEAVY ORGANZA EMBROIDERY**

**WASHING INSTRUCTIONS**  
DO NOT DRY IN THE SUN OR IN A DRYING MACHINE  
DO NOT USE BLEACHING AGENTS, SHOULD BE WASHED IN COLD WATER  
DO NOT USE HOT IRON. IF IRONING IS REQUIRED, USE LOW TEMPERATURE  
IRON-CLIQUE AND WET PRESSURE  
WASHING INSTRUCTIONS SHOULD BE FOLLOWED BY THE CUSTOMER  
IF YOU HAVE ANY QUESTIONS, PLEASE CONTACT US



DS-169 C

**Top- HEAVY ORGANZA EMBROIDERY WITH HAND WORK**

**Bottom/Inner- SANTOON**

**Dupatta- HEAVY ORGANZA EMBROIDERY**

**WASHING INSTRUCTIONS**  
 DO NOT DRY AT THE END OF DRYING OR IRONING OR HANGING  
 BEFORE DRYING OR IRONING, SHOULD BE SOAKED IN WATER  
 FULLY COMPACTION TO PREVENT FROM DAMAGE  
 DO NOT USE HOT IRON IN PROXIMITY TO BODY OR NECK OF FABRIC  
 IRON SHOULD BE USED WITH PRESSURE  
 WASHING INSTRUCTIONS SHOULD BE FOLLOWED BY THE CUSTOMER  
 IF YOU HAVE ANY QUERY PLEASE CONTACT US



DS-169 B

**Top- HEAVY ORGANZA EMBROIDERY WITH HAND WORK**

**Bottom/Inner- SANTOON**

**Dupatta- HEAVY ORGANZA EMBROIDERY**

**WASHING INSTRUCTIONS**  
 DO NOT DRY AT THE END OF DRYING OR IRONING OR HANGING  
 BEFORE DRYING OR IRONING, SHOULD BE SOAKED IN WATER  
 ALL COMPONENTS SHOULD BE SEPARATED  
 DO NOT USE HOT IRON OR PROTECTIVE PRESSURE OF IRONING  
 IRON-CLASSED AND IRON PRESSURE SHOULD  
 WASHED IN WARMER TEMPERATURE DO NOT USE HOT IRON OR IRONING  
 (IF YOU HAVE ANY INQUIRY PLEASE CONTACT US)