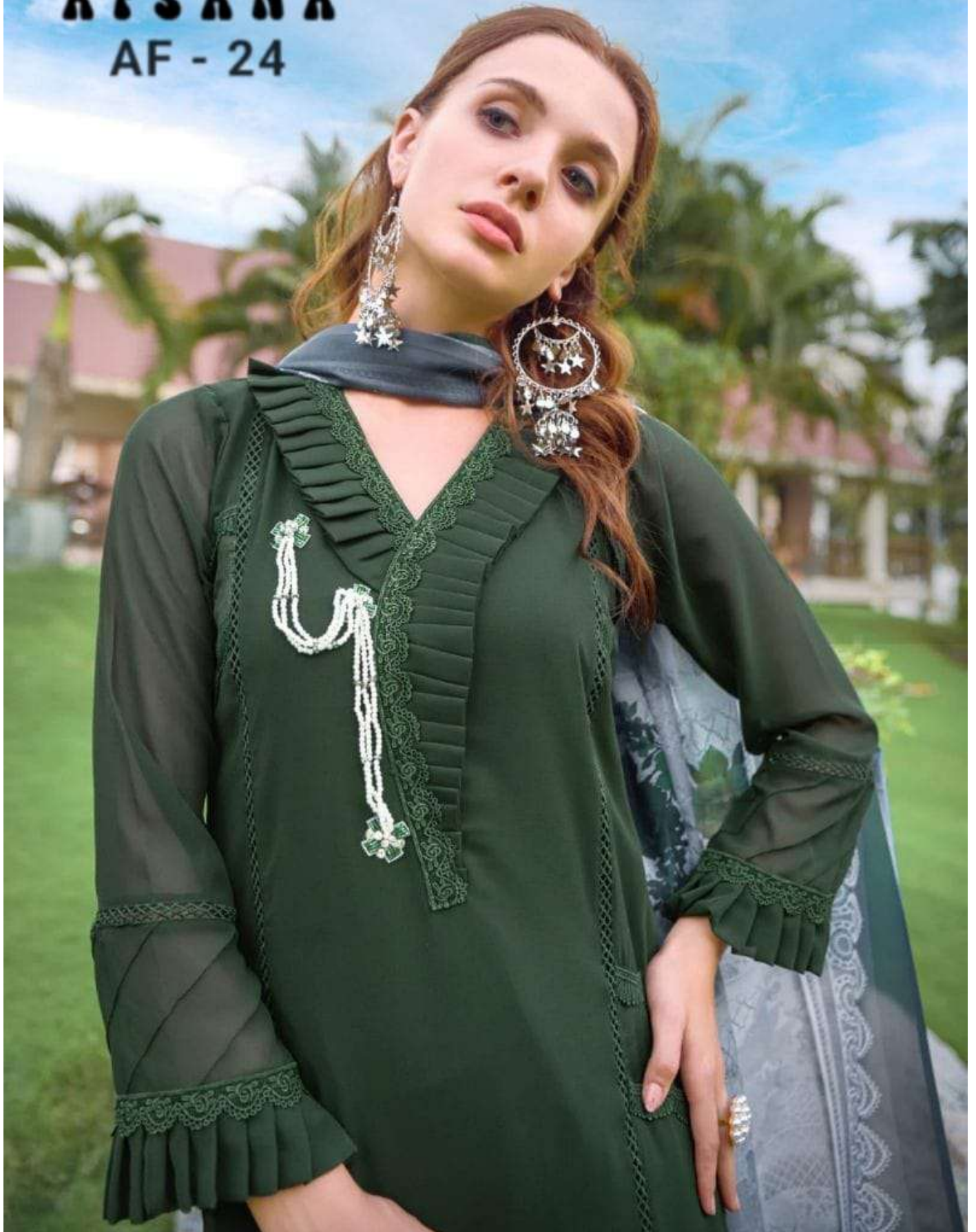




AFSANA

AF - 24





AFSANA

AF - 24





AFSANA
AF - 24





AFSANA
AF - 24





AFSANA
AF - 24





AFSANA

AF - 24





A F S A N A

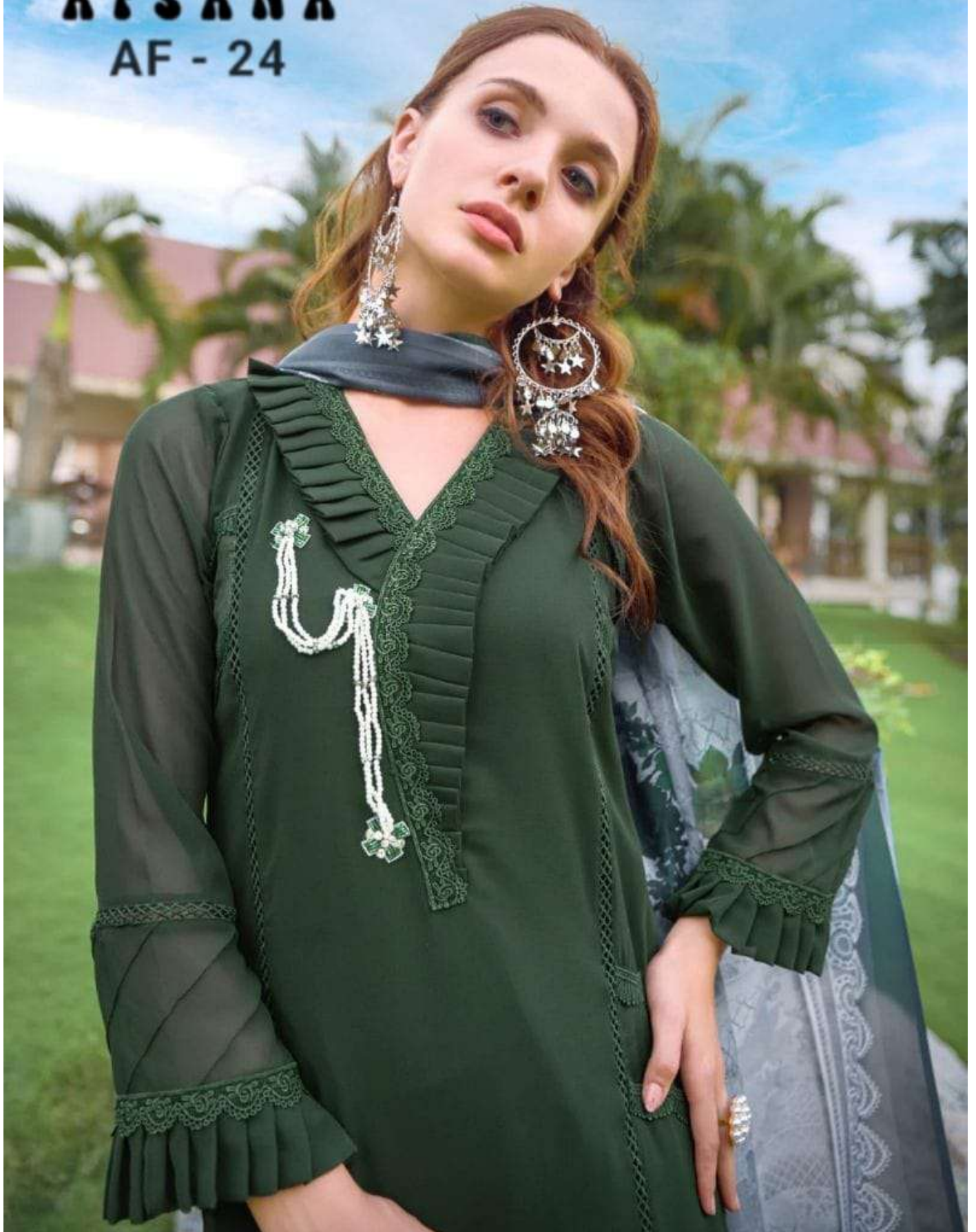
AF - 24





AFSANA

AF - 24





AFSANA
AF - 24



A woman with long brown hair is standing in a lush garden. She is wearing a dark green, long-sleeved traditional outfit with intricate lace and fringe details. The outfit includes a long tunic with a V-neckline, a matching shawl with a silver pattern, and matching trousers. She is also wearing large, ornate earrings, a ring, and dark high-heeled sandals. The background features palm trees, a gazebo, and a building.


AFSANA
AF - 24